

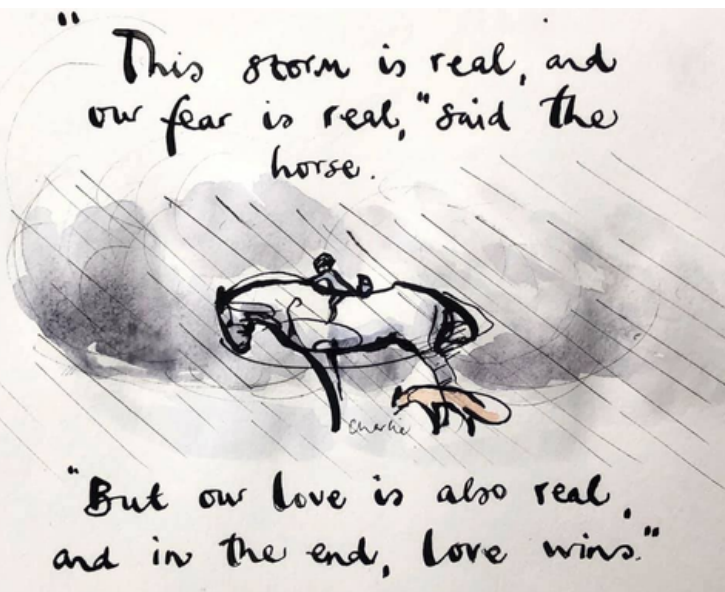
SEND

Newsletter



YEW TREE
PRIMARY ACADEMY
WADE DEACON TRUST

Yew Tree Primary Academy –
Spring 1 2023



Welcome!

Welcome to the first of our half-termly SEND newsletters aimed at keeping you informed of services who can support you, work we are doing in school and any forthcoming parent training. We hope you will find these a useful resource and would welcome ideas for what you would like to see in future newsletters.

Meet the Team!

- Miss Appleton – SENDCo – if you have any queries regarding special educational needs or provision for your child, please contact me via Dojo or see me on the gate.
- Mrs Gray – DSP Manager
- Miss Ellis – Learning Mentor – Miss Ellis provides nurture and therapeutic support for children needing extra support with social, emotional or mental health needs.
- Mrs Sargison – Assistant SENCO
- Miss North – SEND Admin
- Mrs Atkins – Outreach Teacher – Completes SEND assessments

Our School Website

Our school website is a great place to start when looking for information needed related to SEND. If you click on 'Curriculum' then 'SEND' you will be directed to a range of information and links to support you. One great link to click on is the Knowsley Local Offer – this outlines all the provision on offer in Knowsley. Another good document to read is our SEND information report which outlines the support we offer in school.

News



PPPs – Are you aware of your child's targets? You should have received a copy of your child's PPP. If you haven't, please ask and we will print one for you. We firmly believe that school and parents are a team and we love parents to be involved as much as possible. If you would like to contribute to the plan, let us know and we can add in your ideas.



Training

Last term we ran training on Autism and behaviours relating to Autism. This term we will be offering sensory training led by an Occupational Therapist. Keep your eye on Class Dojo for dates. Hope you can join us!

Intervention of the term



- Each newsletter, we will explain in more detail one of the interventions we do in school
- Lego therapy – this intervention is used in school to develop social communication skills. Children are grouped into 3s and are tasked to build a specific product. They are assigned a clear role (engineer, builder or supplier) and must use their communication and language skills to complete the build. The children really enjoy this as they are learning through play as they are building their social skills.

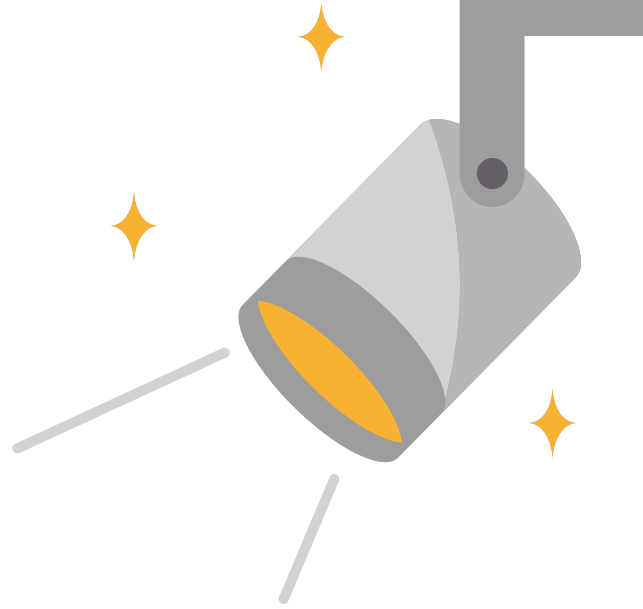
Top tips from our Speech and Language Therapist

Each term our Speech and Language Therapist will be providing a tip for parents to try at home to support the development of speech and language:

- Talk lots as a family. Model good speech and language sounds yourself. If your child makes a mistake, don't correct them but instead, repeat it back to them correctly. E.g. Child: 'I goed to the park' Parent: 'You went to the park? How exciting!'

Spotlight on...

SEND ACRONYMS



Education is notorious for using lots of different acronyms and the world of SEND is absolutely full of them. Here is a glossary of some of the most common acronyms you may see:

SEND – Special Educational Needs

PPP – Personal Provision Plan. This is a set of targets written by your child's teacher based on supporting their individual needs. In Early Years this is called a Play Plan.

EHCP – Education Health and Care Plan

ASC – Autistic Spectrum Condition

ADHD – Attention Deficit Hyperactivity Disorder

ND Pathway – Neuro-Developmental Pathway (Referral pathway for Autism and ADHD)

CAMHS – Child and Adolescent Mental Health Service

EP – Educational Psychologist

SALT – Speech and Language Therapist

OT – Occupational Therapist

SENCo – Special Educational Needs Coordinator (every school has one, at Yew Tree it is Miss Appleton)

SpLD – Specific Learning Difficulty – e.g a diagnosed barrier to learning such as dyslexia, dyspraxia or ADHD.

If we use any acronyms you are unsure of, please do ask for clarification.